

**RETAIL/OFFICE
SPACE FOR
LEASE**

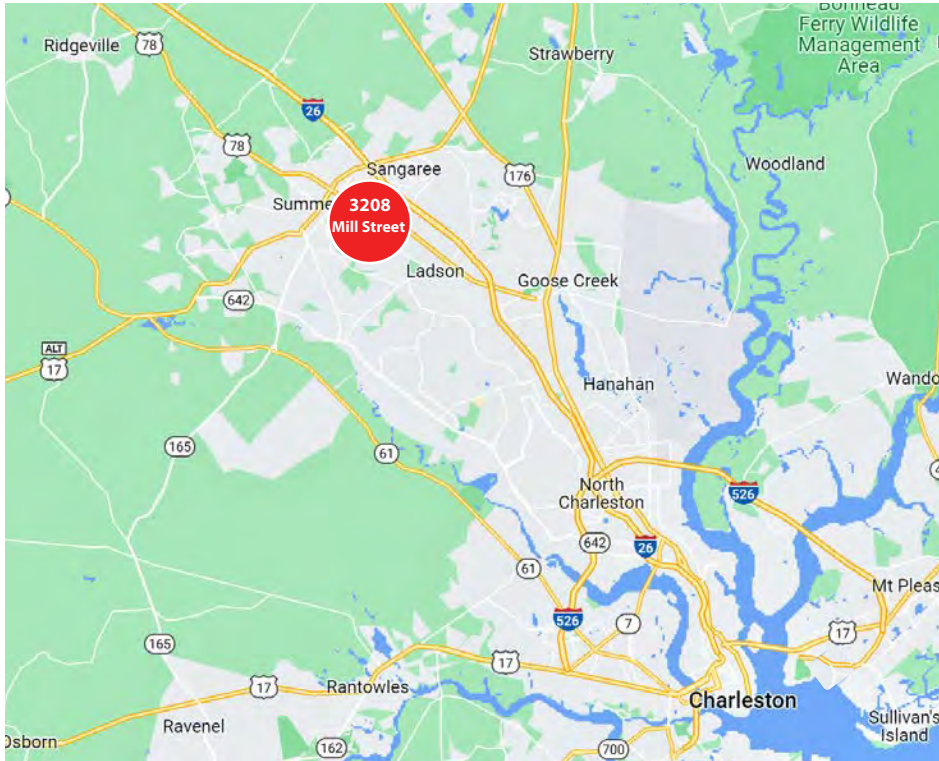
**MILL STREET
BUSINESS CENTER**

3208 MILL STREET
SUMMERVILLE, SC 29485

1,191 - 2,605 SF AVAILABLE



Grace Moring, Leasing
843.518.6808
gmoring@wrsrealty.com



OFFERING SUMMARY

Address	3208 Mill Street, Summerville, SC 29485
Zoning	Community Commercial
County	Charleston County
Municipality	North Charleston
Lease Type	NNN
Available SF	Suite 400 - 1,414 SF Suite 500 - 1,191 SF

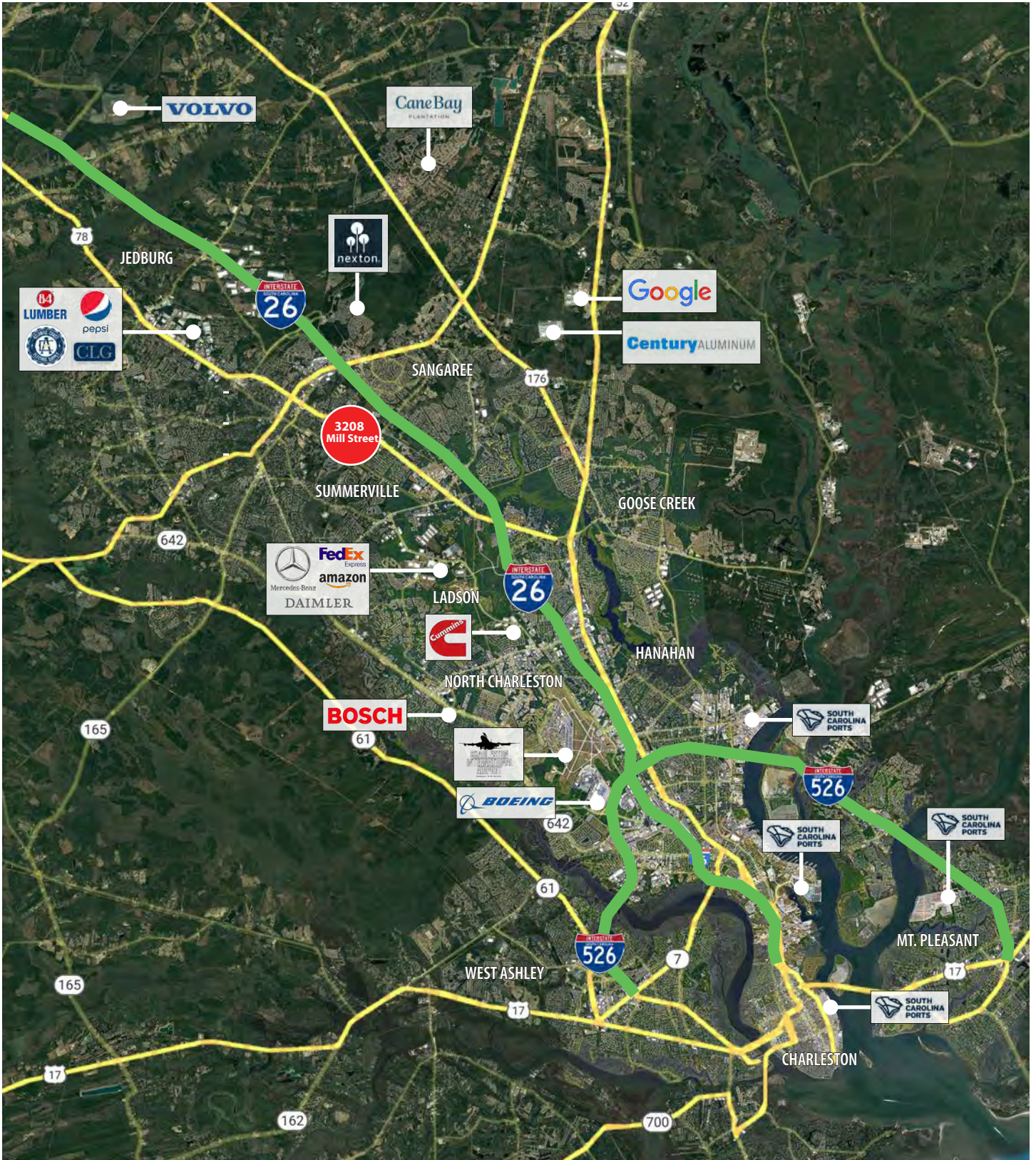
THE PROPERTY

3208 Mill Street is located just off of Highway 78 in Summerville, 4 miles South of Exit 199 on I-26. The flex center is in close proximity to I-26 connecting it to The Charleston Port Terminals, The Charleston International Airport and local manufacturers, Mercedes, Boeing, Volvo and Bosch.

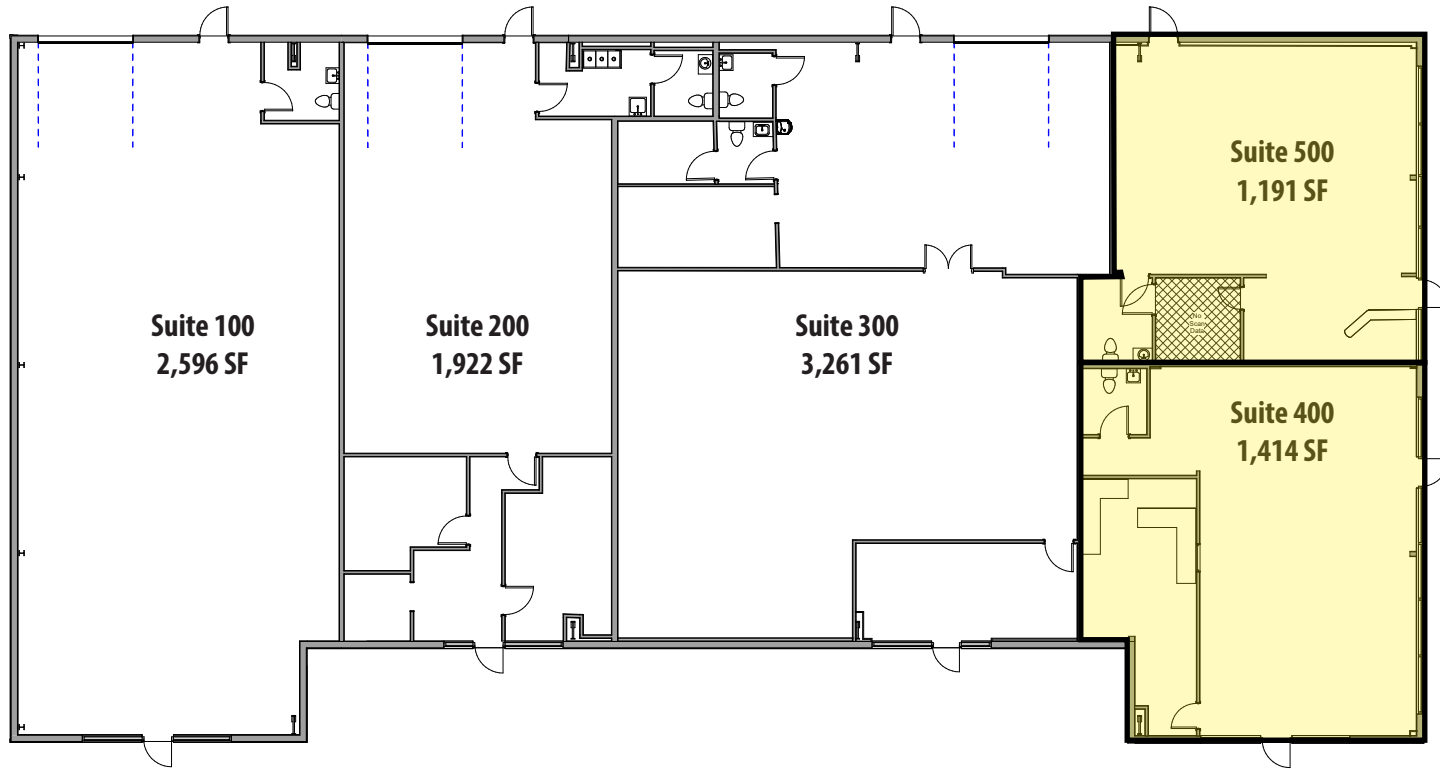
Suite 400 (1,414 SF) and Suite 500 (1,191 SF) are vacant and available now. Spaces can be combined, offering 2,605 SF.

Both spaces are ideal for a retail or office tenant. Offering excellent street visibility from Highway 78, monument an building signage available, ample parking, and a shared loading dock.

LOCATION



3208 MILL STREET FLOOR PLAN



○ First Floor Plan
3/16" = 1'-0"



3208 Mill St Summerville SC

3208 Mill St, Summerville, SC 29485, USA

First Floor Plan

December 5, 2024

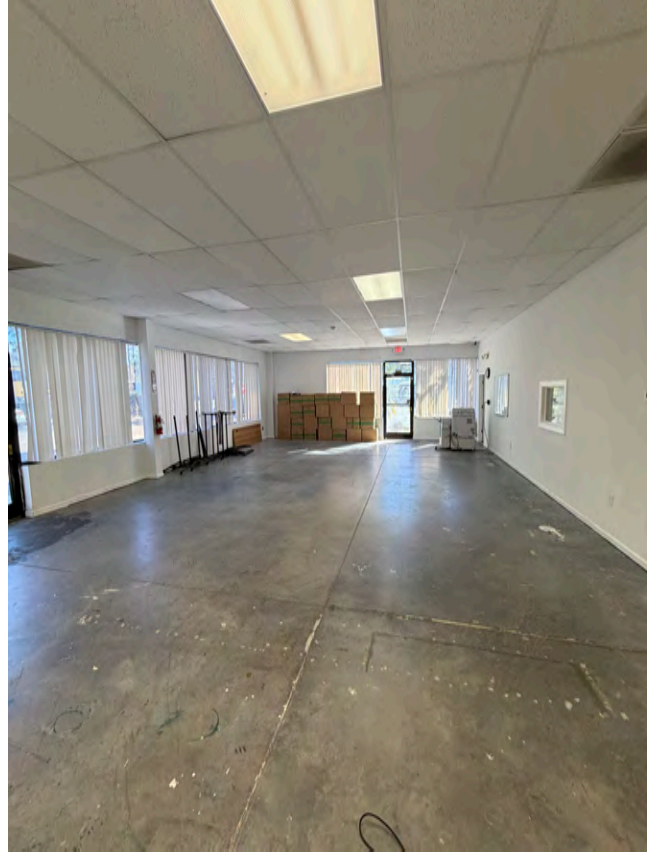
A101

The information contained herein was obtained from sources believed reliable, however, WRS Inc. makes no guarantees, warranties, or representations as to the completeness or accuracy thereof.

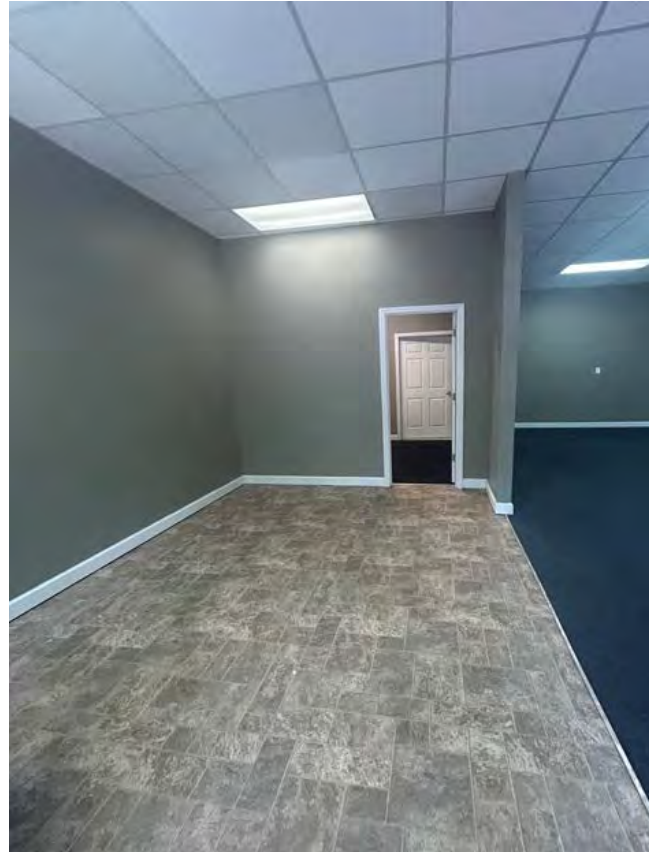
The presentation of this property is submitted subject to errors, omissions, change of tenants or conditions prior to sale or lease, or withdrawal without notice.

WRS Inc. | 410 Mill Street, Bldg. 1, Suite 200 | Mount Pleasant, SC 29464 | main 843.654.7888 | fax 843.654.7889

SUITE 400 PHOTOS



SUITE 500 PHOTOS





WRSINC
REAL ESTATE INVESTMENTS

410 Mill Street, Bldg. 1, Suite 200
Mount Pleasant, SC 29464
843.654.7888 Office
843.654.7889 Fax
www.wrsrealstate.com